



# CITY OF HOT SPRINGS

Utilities Department

780 Adams Street

Hot Springs, Arkansas 71901

March 11, 2024

VIA Email

Leslie Allen-Daniel  
Enforcement Analyst – Water Division  
Arkansas Energy & Environment – Environmental Quality  
5301 Northshore Drive  
North Little Rock, AR 72118-5317

**RE: City of Hot Springs Utilities  
Permit No. AR0033880 / AFIN 26-00145 / CAO LIS 22-007  
Manhole 1750, Gulpha Creek and Spencer Bay**

Dear Ms. Allen-Daniel,

The following update is a brief synopsis of the progress regarding the CAO LIS 22-007 to the Gulpha Basin Gravity Sewer Interceptor, Manhole 1750, Gulpha Basin Sewer Pump Station and Force Main.

RJN Group, Inc. has the Contract for the Engineering and Construction Management for the Lower Gulpha Gravity Sewer Interceptor from Vernel Street to the Gulpha Basin Sewer Pump Station. The City anticipates Regulatory Approval soon of the Plans & Specifications. As soon as approval is granted and funding in place, the project will consist of four (4) stages. The total project construction cost has an estimate of approximately \$25M.

Crist Engineers, Inc. has the Engineering and Construction Management Contract for the Gulpha Basin Sewer Pump Station Improvements. The construction of the pump station will be by Max Foote Construction Company, Inc. The Construction Management at Risk (CMAR) Contract for the construction of the pump station is approximately \$10M. Max Foote Construction Company, Inc. will also install the three (3) 500 HP submersible Flygt Pumps and the 1,250 kW Emergency Back-up Generator already purchased by the City.

The Guaranteed Maximum Price (GMP) for the Davidson Drive Wastewater Treatment Plant Improvements is due from Max Foote Construction Company, Inc. by March 19, 2024.

Hanson & McLaughlin, LLC has the Engineering Contract for the Gulpha Basin Pump Station Force Main from the pump station to the Davidson Drive WWTP. Bids on the Force Main - Phase 1 opened on October 9, 2023. On November 7, 2023 the Hot Springs Board of Directors approved a Resolution awarding the bid to the Coakley Company for Phase I of the project (24" and 30" force mains from Gulpha Pump Station to Chase Place). The Pre-Construction Meeting for the project was on January 8, 2024. Clearing and grubbing for the pipeline ROW

started on January 22, 2024 and delivery of the 24" and 30" PVC Pipe began February 5, 2024. Phase II will extend the 30" force main from Chase Place to the Davidson Drive WWTP. Completing the force main will allow the City of Hot Springs to run the existing pump station at full capacity (12 MGD) while the new pump station is constructed.

Hawkins-Weir Engineers, Inc. has the Engineering and Construction Management Contract for the Spring Street Collection System Improvement project. This phase of the overall Gulpha Basin project will be funded in the future. The Plans and Specifications have all the required Regulatory Approvals and ARDOT Permits. As soon as City funding becomes available, this project will move forward.

The timing for the improvements in the Gulpha Basin, including pump station, gravity and force main infrastructure is directly dependent on the completion of improvements at the Davidson Drive WWTP. ADEQ, along with EPA are still reviewing the construction permit for the treatment plant improvements as of today's date.

Please see the attached reports for monthly SSO's and required testing requirements.

If you have any questions, please contact me at (501) 651-7730 or by email at [mledbetter@cityhs.net](mailto:mledbetter@cityhs.net).

Sincerely,



Monty Ledbetter  
Utilities Director

Attachments – February 2024 Lab Results

cc: **City of Hot Springs** - Bill Burrough, City Manager; Denny McPhate, Deputy City Manager; Harold Mauldin, Wastewater Facilities Operations Manager; Todd Piller, Capital Project Manager;  
**Consultants** - Craig Johnson, Crist  
**Arkansas Energy & Environment Division of Environmental Quality** – Richard Healey

# Manhole 1750 - Gulpha Sewer Basin

117 Catherine Heights Road  
Hot Springs, Arkansas

- Affecting Gulpha Creek and Spencer Bay

On November 18, 2022 DEQ provided a response accepting Hot Springs Utilities Revised Bacteriological Sampling and Communications Plan for SSO's. The plan states that the Water Quality Assessment testing and Fecal Coliforms are no longer needed. The plan also aligns with the contact periods as depicted in Rule 2.507 for acceptable E.Coli numbers.

Acceptable E.Coli cfu limits: **October 1 through April 30 <630 cfu**  
May 1 through September 30 <126 cfu

## Manhole 1750 Sanitary Sewer Overflows for February 2024

Lab Results

Carried over from January 2024

**Overflow Date:** 01/08/2024  
**End Date:** 02/20/2024  
**Cause:** Rainfall, Equipment Failure  
**Discharge:** Approximately 13,707,000 gallons discharge to Gulpha Creek  
**Actions Taken:** Environmental Cleanup, Hydro cleaned, Jet-Vac, Disinfected, Deodorized, Raked/picked up and Spread Lime. (see attached photos)

Lab Results

Sample Date:	1/9/24	Sample Date:	1/29/24	Sample Date:	2/8/2024	Sample Date:	2/15/2024
Site No.	E. coli (cfu)	Site No	E. coli (cfu)	Site No	E. coli (cfu)	Site No	E. coli (cfu)
1	47.31	1	28.5	1	93.3	1	18.17

Manhole 1750 SSO began overflowing on January 8, 2024 and continued overflowing until February 20, 2024.

Testing was performed weekly at test site 1 based on results.

January results are testing results are included for continuity.

## Manhole 1748 Sanitary Sewer Overflows for February 2024

Lab Results

**Overflow Date:** 01/22/2024  
**End Date:** 02/19/2024  
**Cause:** Rainfall, Equipment Failure  
**Discharge:** Approximately 5,484,000 gallons discharge to Gulpha Creek  
**Actions Taken:** Environmental Cleanup, Hydro cleaned, Jet-Vac, Disinfected, Deodorized, Raked/picked up and Spread Lime. (see attached photos)

Lab Results are the same as for 1750 above

# PHOTOS FROM SSO CLEANUP AT MANHOLE 1750



Before Cleanup



Stormwater damage to road

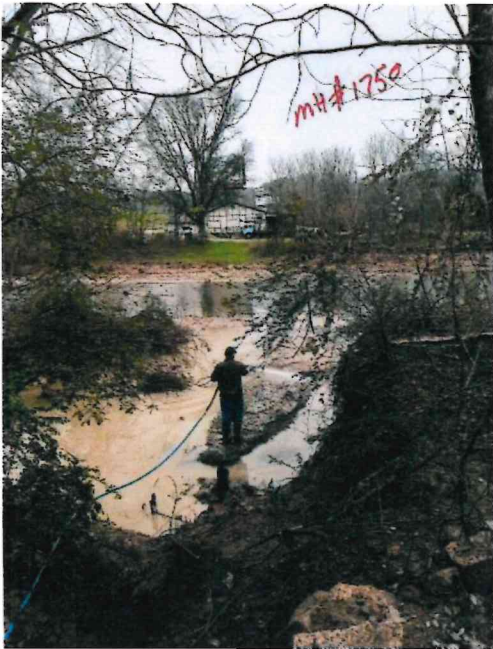
Before Cleanup



Lime



PHOTOS FROM SSO CLEANUP AT MANHOLE 1750



Cleanup after storm



Cleanup – New Filter Fabric



Adding New Filter Fabric



Wash Down

AT MANHOLE 1750



Wash Down



Added Gravel



New Silt Fencing

# PHOTOS FROM SSO CLEANUP AT MANHOLE 1748



Wash Down and Cleanup Around 1748

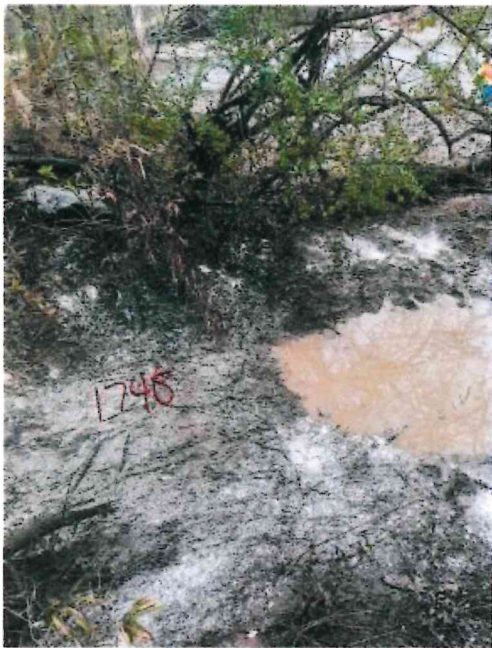


Spread with Enzyme and Lime

PHOTOS FROM SSO CLEANUP AT MANHOLE 1748



Spread with Enzyme and Lime





# PHOTOS FROM SSO CLEANUP AT MANHOLE 1748



Spread with Enzyme and Lime



New Silt Fencing

PHOTOS FROM SSO CLEANUP AT MANHOLE 1748



New Silt Fencing

